



Model 670K9 SORtrax 4-20mA RF Continuous Level Transmitter

General Instructions

SORtrax is a 4-20 mA continuous level transmitter. It produces a 4-20mA current superimposed on the 12-55 VDC loop supply lines. The 4-20mA current is proportional to the level sensed by the instrument.

SORtrax detects level based on process admittance. Bench or field calibration is easily accomplished. Coarse and fine adjustments are provided to allow the user full control over the zero and span settings, and to insure the most accurate operation possible. Recalibration is needed each time the content of the process changes, due to the different dielectric constant of each material.

NOTE: If you suspect that a product is defective, contact the factory or the SOR® Representative in your area for a return authorization number (RMA). This product should only be installed by trained and competent personnel.



Probe Installation

Probes are mounted vertically from the top of a vessel. The probe must be electrically isolated from the vessel; make no connection between the probe and the vessel other than the process connection and (if applicable) the threaded weight at the probe tip.

Do not weld any part of this instrument.

Make sure that the sensor can be fully inserted and tightened without interference from obstructions inside the tank or vessel. The probe should be mounted away from inlet fill paths. Spray from a fill path may cause false level indications.

Table of Contents

Probe Installation	1
Electrical Connection	2
Empty and Fill Calibration	4
Bench Calibration	5
Blind Calibration	6
Probe and Transmitter Performance Verification ..	7
CE Mark Installation	7
RF Probe Grounding Scheme	8
Control Drawings	9
Troubleshooting	12
Dimensions	13

Design and specifications are subject to change without notice.

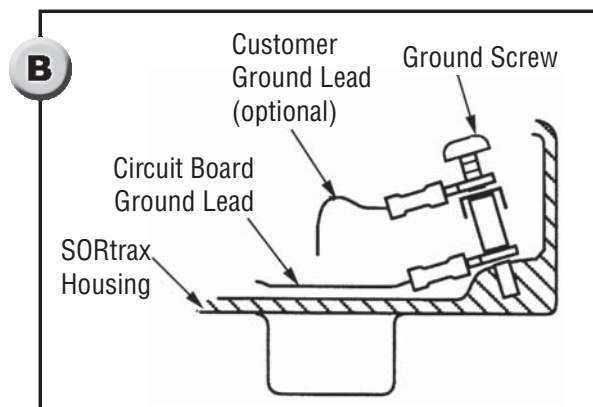
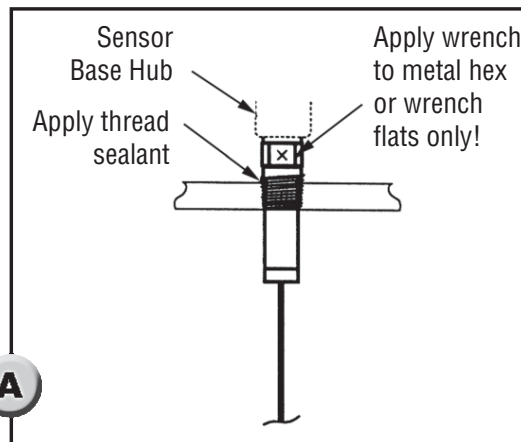
For latest revision, go to www.sorinc.com

For pressurized vessels, seal the flanged or threaded process connection to prevent leakage.

Do not use the sensor base as a handle to tighten the process connection.

Use suitable mounting bolts to mount a flanged probe on a flanged process connection.

Proper grounding is imperative for correct operation of the unit.

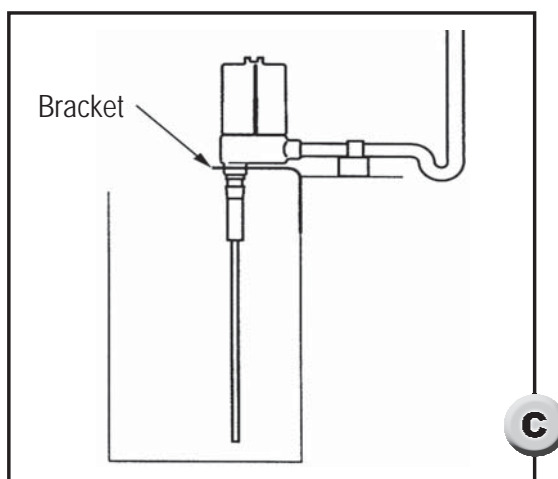


The unit can be grounded two ways. If the tank is metallic, grounding is provided by the tank. If the tank is not metallic, or does not adequately make contact with the sensor, a separate ground wire must be provided by the customer. Run ground wiring through the conduit and into the electronics housing. Attach the ground wire per **B**.

Open Sump or Basin

Do not suspend the unit by rigid conduit installed in the electrical hub. When installing the unit over an open sump or basin, use a suitable bracket to support the instrument.

Condensation build-up inside the electronics housing may damage the sensitive circuitry. To prevent the ingress of moisture, use drip loops or conduit runs which slope down from the enclosure. (See **C**)



Electrical Connection

Ensure that wiring conforms to all applicable local and national electrical codes and install unit(s) according to relevant national and local safety codes.



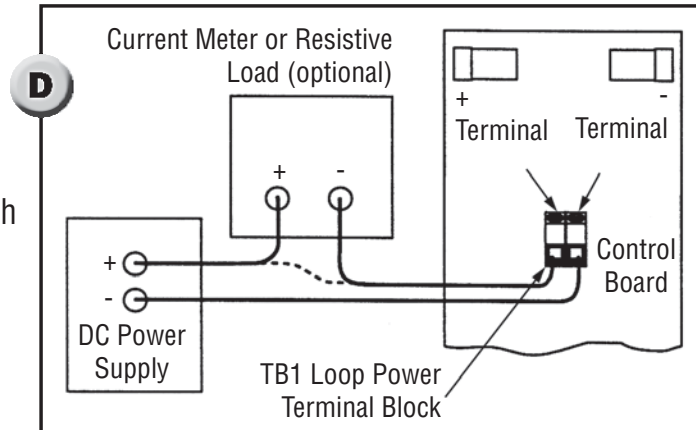
Electrical power must be disconnected from explosion proof models before the cover is removed. Failure to do so could result in severe personal injury or substantial property damage.



This product must be installed with an explosion proof breather vent per agency requirements and the National Electric Code - Article 501, Section F, paragraph 3.

Use 18 - 22 AWG shielded twisted pair wire to make all signal and power connections. Ensure that wiring conforms to all applicable local and national electrical codes and install unit(s) according to relevant national and local safety codes.

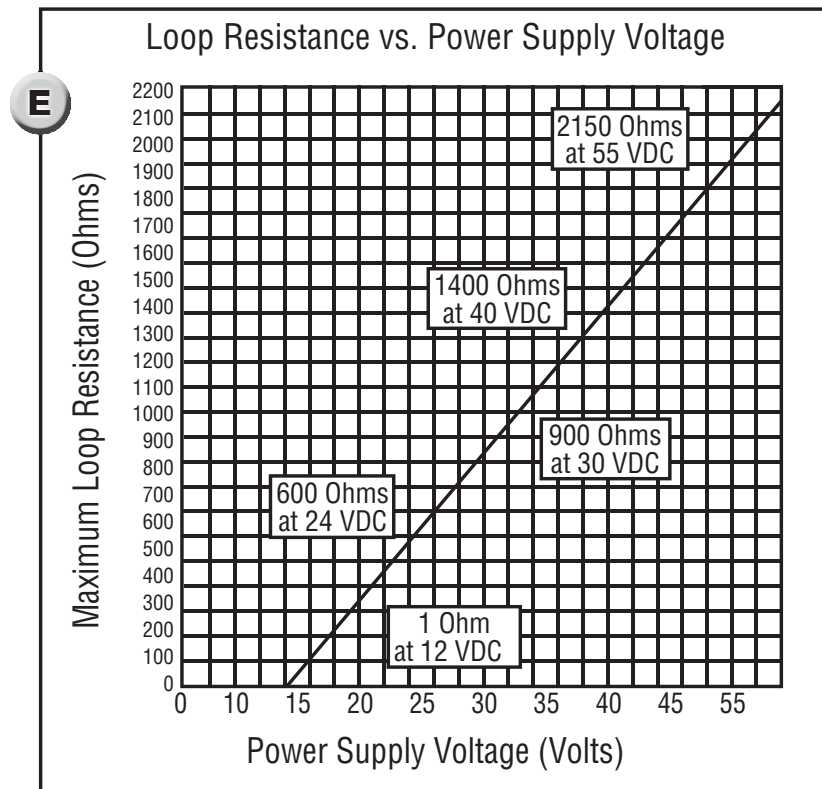
- 1 Make sure the power source is turned off.
- 2 Remove the housing cover.
- 3 Pull power and signal wire through the conduit connection and into the control housing.
- 4 Locate TB1 on the control board. (See **D**) Terminals are labeled "+" and "-". Connect power leads to the proper terminals.



- 5 Do not exceed the maximum loop resistance for the circuit. (See **E**) Use the following formula to determine the maximum loop resistance of your circuit:

$$R \text{ (ohms)} = (\text{input voltage} - 12) \div 20.0 \text{ mA}$$

NOTE: Refer to the individual device specifications of user-supplied equipment to determine the resistive load (in ohms) and the power requirements.



Empty and Fill Calibration

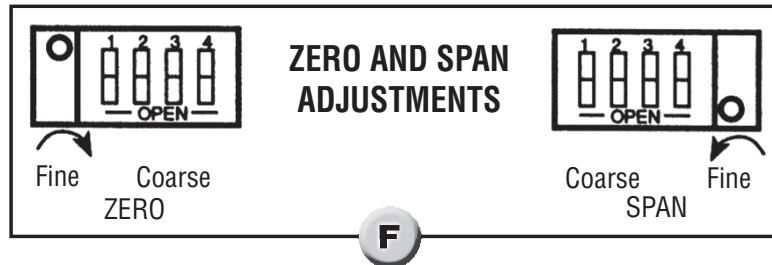


Electrical power must be disconnected from explosion proof models before the cover is removed. Failure to do so could result in severe personal injury or substantial property damage.



Electrical power must be disconnected from explosion proof models before the cover is removed. Failure to do so could result in severe personal injury or substantial property damage.

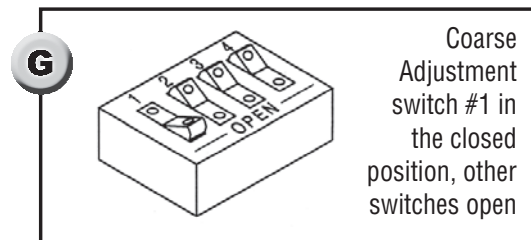
- 1 Install and connect power to the unit per previous pages. Install a current meter to the unit per **D**.
- 2 Turn both potentiometers (fine adjustments for ZERO and SPAN) fully counterclockwise. (See **F**)



Zero Adjustment (4 mA)

- 3 Close switch #1 on coarse adjustment switches for ZERO and SPAN. (See **G**)
- 4 Open switches #2, #3, and #4 on both coarse adjustment switches per **G**.
- 5 With the tank at 0%, view the reading on the current meter. If the output is less than 4 mA, turn the fine ZERO adjustment clockwise until 4 mA is reached.

NOTE: Only one ZERO switch may be in the closed position at any time.

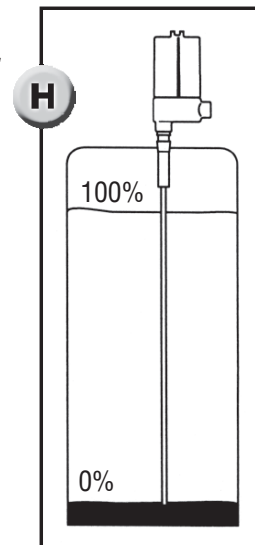


- 6 If the output is greater than 4 mA, close the other switches one at a time (opening the previous switch) until a reading less than 4 mA is attained. Turn the fine ZERO adjustment clockwise until 4 mA is reached.

NOTE: If 4 mA cannot be obtained, see the troubleshooting chart on page 14.

Span Adjustment (20 mA)

- 7 Set the process to desired high level. (See **H**)
- 8 Ensure SPAN coarse adjust switch #1 is in the closed position, with all other switches open.
- 9 Rotate the SPAN fine adjustment pot clockwise until the meter indicates 20 mA. If a 20 mA reading cannot be obtained, proceed to step 10.
- 10 Open SPAN switch #1 (coarse) and close SPAN switch #2. Repeat step 9. If a 20 mA reading cannot be obtained, repeat the procedure closing switch #3 or #4 until 20 mA is indicated.



Bench Calibration

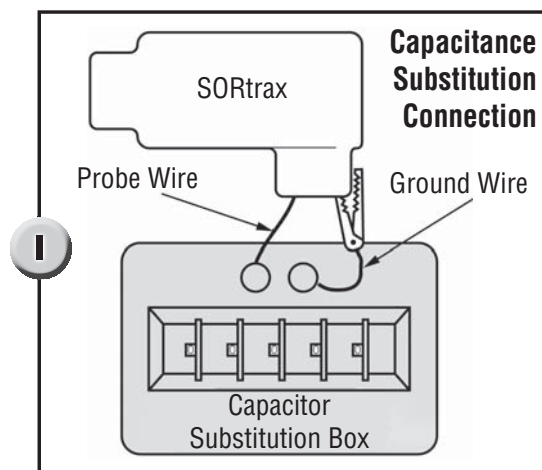


Electrical power must be disconnected from explosion proof models before the cover is removed. Failure to do so could result in severe personal injury or substantial property damage.

- 1 Remove the sensor. (Unscrew the sensor from the housing. Disconnect the ring terminal or banana plug from the sensor end.)
- 2 Connect power and a current meter to the unit per **D**. Connect a capacitor substitution box (available from SOR) to the circuit to simulate the probe. Connect the probe lead to one terminal of the capacitor substitution box, and connect the other terminal of the box to the control housing. (See **I**) Use short connection wires to eliminate any stray capacitance which may affect the calibration.
- 3 Set the capacitance box to desired zero level capacitance.
- 4 Rotate ZERO and SPAN fine adjustment potentiometers (pots) at least 22 turns counter-clockwise.

Zero Adjustment (4 mA)

- 5 Close ZERO switch #1 and SPAN switch #1. (See **F**) Open all other switches per **G**.
- 6 View the reading on the current meter. If the output is less than 4 mA, turn the fine ZERO adjustment clockwise until 4 mA is reached.



NOTE: Only one ZERO switch may be in the closed position at any time.

- 7 If the output is greater than 4 mA, (opening the previous switch) close each coarse adjustment switch, one at a time, until a reading less than 4 mA is reached. Turn the fine ZERO adjustment clockwise until 4 mA is reached.

NOTE: If 4 mA cannot be obtained, please see the trouble shooting chart on page 14.

Span Adjustment (20 mA)

- 8 Set the capacitance box to the desired maximum capacitance value.
- 9 Ensure SPAN coarse adjust switch #1 is in the closed position, with all other switches open.
- 10 Rotate the SPAN fine adjustment pot clockwise until the meter indicates 20 mA. If a 20 mA reading cannot be obtained, proceed to step 11.
- 11 Open SPAN switch #1 (coarse) and close SPAN switch #2. Repeat step 10. If a 20 mA reading cannot be obtained, repeat the procedure closing switch #3 or #4 until 20 mA is indicated.

NOTE: Only one SPAN switch may be in the closed position at any time.

NOTE: If 20 mA cannot be obtained, please see the troubleshooting chart on page 14.

If the zero setting is changed, the span will change, and the unit must be recalibrated.

Blind Calibration



Electrical power must be disconnected from explosion proof models before the cover is removed. Failure to do so could result in severe personal injury or substantial property damage.

Use this calibration method when it is not possible to raise or lower the level of the process in the vessel or tank. Do not permanently install the unit until after setting the ZERO (4 mA) point.

Use the wiring configuration in **L** when the loop cannot be conveniently opened for current monitoring. Attach a current meter as shown.

- 1 Turn both potentiometers (fine adjustments for ZERO and SPAN) fully counterclockwise. (See **F**)

Zero Adjustment (4 mA)

- 2 Close switch #1 on coarse adjustment switches for ZERO and SPAN. (See **G**)
- 3 Open switches #2, #3, and #4 on both coarse adjustment switches per **G**.
- 4 With the end of the probe just touching the process, view the output. If the output is less than 4 mA, turn the fine ZERO adjustment clockwise until 4 mA is reached.

NOTE: Only one ZERO switch may be in the closed position at any time.

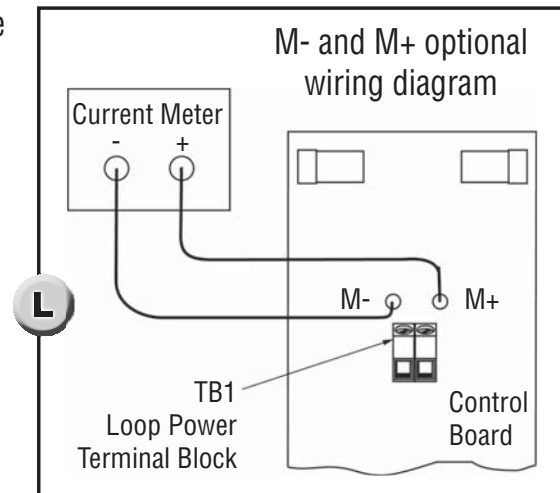
- 5 If the output is more than 4 mA, (opening the previous switch) close each coarse adjustment switch individually until a reading less than 4 mA is attained. Turn the fine ZERO adjustment clock-wise until 4 mA is reached.

NOTE: If 4 mA cannot be obtained, see the troubleshooting chart on page 14.

Span Adjustment (20 mA)

- 6 Calibrate for span by determining the present level in the tank, and setting the span proportionally. For best results, the level should be at 50% or greater.
- 7 Determine the level present in the tank. Complete the unit installation, except for the housing cover.
- 8 Calculate the expected current output using the following formula: $20\text{mA} \times (\% \text{ of tank fill}) + 4\text{mA} = \text{output}$.
- 9 For example: Tank level is at 50%, set SPAN coarse and fine for 20mA reading ($16\text{mA} \times 50\% + 4\text{mA}$). If the material level is at 90%, set the span adjustment for 18.4 mA ($16\text{mA} \times 90\% + 4\text{mA}$). The 100% fill level should be verified at the earliest opportunity.

If the zero setting is changed, the span will change, and the unit must be recalibrated.



Probe and Transmitter Performance Verification

Probe Check Remove the transmitter from the probe. With no process on the probe, check the resistance from the probe to ground. Resistance less than $1M\Omega$ indicates leakage in the probe. With process touching the probe, check the resistance from the probe to ground. Resistance of $100K\Omega$ or less in the case of a bare probe with conductive material indicates that an insulated probe is required. In any other case, a defect in the probe is indicated.

Transmitter Drift Check If the output of the transmitter is drifting, it is important to verify if the drift is due to the probe or the transmitter. If the probe is connected and installed properly, it will not drift.

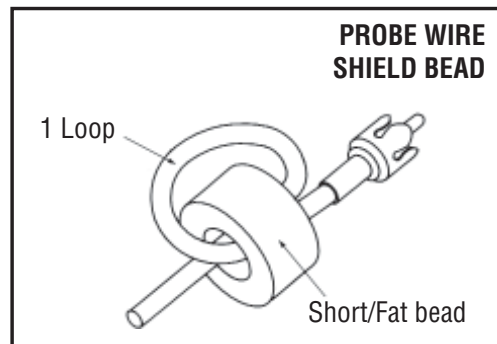
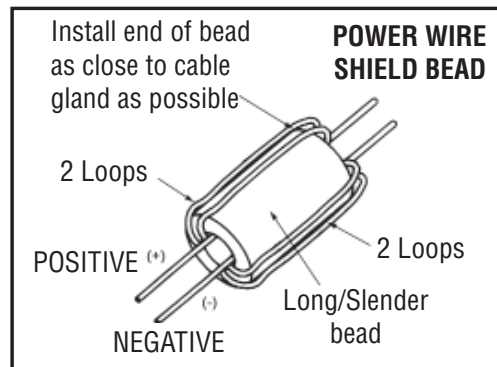
Remove the probe from the transmitter. Without touching the calibration settings, connect a capacitance across the probe to ground input. See Figure 9 on page 5. Change the capacitance until the transmitter output is 4.00 mA. Observe the zero point reading for twenty four hours. If the reading is stable, then the probe or the application is the source of the drift.

CE Mark Installation

When subjected to an RF interference, the 670K9 will maintain the $\pm 1\%$ accuracy in all frequency ranges with the following exception:

The unit is susceptible to a conducted RF interference in the range of 31-40MHz, reducing the accuracy to $\pm 1.3\%$. The $\pm 1\%$ accuracy is maintained above and below this range.

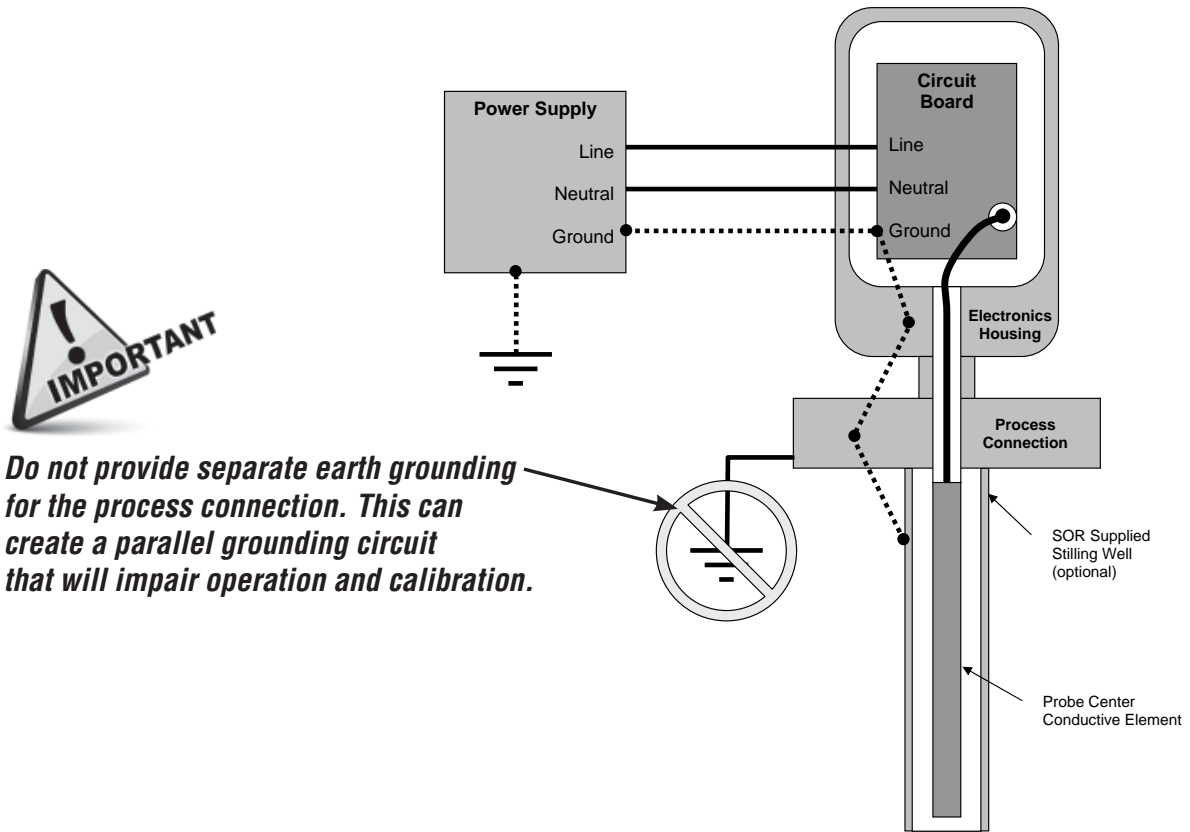
In order to achieve the stated accuracy for 670K9, a shielded cable, cable gland, shield beads, and the probe should be mounted in a metallic vessel. SOR recommends using a shielded cable made of PVC insulation around a tinned copper braid shield (Olflex CY cable or equivalent). Refer to illustrations for installation of shield beads.



SOR RF Probe Grounding Scheme

SOR RF Probe Grounding Scheme

Critical Grounding Path = ●-----●

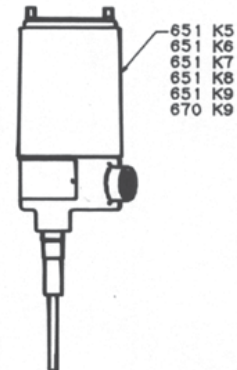
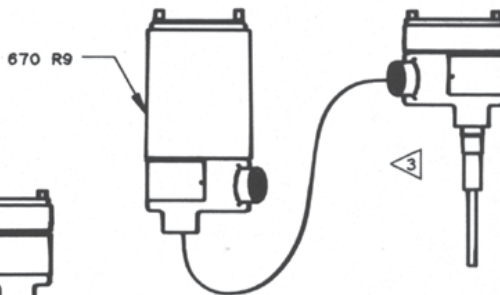
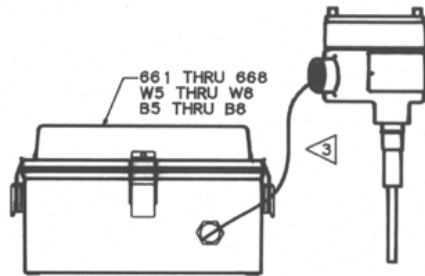
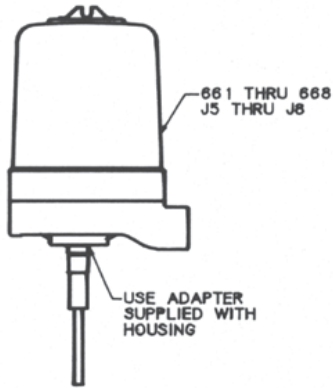


Control Drawing



14685 West 105th Street Lenexa, Kansas 66215 USA
Tel. 913-888-2630 Fax 913-888-0767

DRAWING NO. 9093-010



SENSOR/ELECTRONICS COMBINATIONS	
ELECTRONICS	SENSOR STYLES
651	
661-668	CB, CC, CE, CF, CH, & CJ
670	

- NOTE:
- ONLY THOSE FMRC APPROVED SENSOR/ELECTRONICS COMBINATIONS LISTED ABOVE ARE VALID.
 - SENSOR/ELECTRONICS COMBINATION IS CERTIFIED FOR THE LESSER HAZARDOUS LOCATION RATING OF THE SENSOR OR THE ELECTRONICS HOUSING. FOR EXAMPLE THE ASSEMBLY OF A GROUP B SENSOR WITH A GROUP C HOUSING IS CERTIFIED FOR GROUP C.
 - WIRING SHALL BE INSTALLED IN COMPLIANCE WITH THE NATIONAL ELECTRIC CODE FOR HAZARDOUS (CLASSIFIED) LOCATIONS. SUITABLE LISTED SEAL FITTINGS SHALL BE INSTALLED WITHIN 18" OF EACH ENCLOSURE ENTRANCE.
 - A MINIMUM OF 5 FULL THREAD ENGAGEMENT BETWEEN ALL NPT THREAD JOINTS AND BETWEEN PROBE AND HOUSING CONNECTIONS IS REQUIRED PER NEC.

THIS DRAWING NOT TO BE CHANGED WITHOUT FM APPROVAL.

1	EO-3874	WJG	6/25/96	MLS
2	EO-4281	MLS	9/16/02	Ab

TITLE INSTALLATION DRAWING FM RF EXPF PROBE/ELECTRONICS COMBINATIONS		BY WJG	DATE 6/25/96	DRAWING NO. 9093-010	REV 2
APPD JAC	DATE 7/1/96	SHEET 1 OF 1			



14685 West 105th Street Lenexa, Kansas 66215 USA
Tel. 913-888-2630 Fax 913-888-0767

**SERIES 670 TRANSMITTER
FM APPROVED**

INTRINSICALLY SAFE (ENTITY)

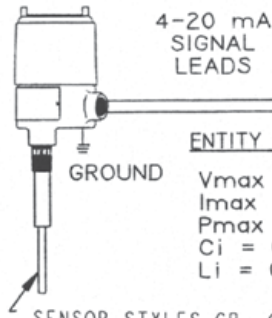
CLASS I, II, III DIVISION 1,
GROUP A, B, C, D, E, F, G

NON - HAZARDOUS LOCATION
INTRINSIC SAFETY BARRIER

HAZARDOUS LOCATION

SAFE AREA

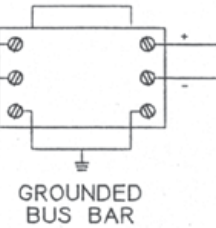
SERIES 670 K9-X-FI TRANSMITTER



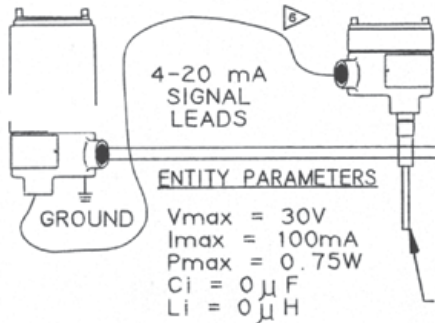
ENTITY PARAMETERS

$V_{max} = 30V$
 $I_{max} = 100mA$
 $P_{max} = 0.75W$
 $C_i = 0 \mu F$
 $L_i = 0 \mu H$

SENSOR STYLES CB, CC, CD, CF, CH, & CJ



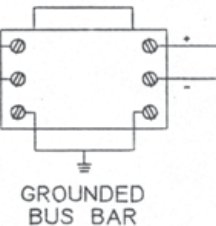
SERIES 670 R9-X-FI TRANSMITTER



ENTITY PARAMETERS

$V_{max} = 30V$
 $I_{max} = 100mA$
 $P_{max} = 0.75W$
 $C_i = 0 \mu F$
 $L_i = 0 \mu H$

SENSOR STYLES CB, CC, CD, CF, CH, & CJ



1. BARRIERS MUST BE INSTALLED IN ACCORDANCE WITH MANUFACTURERS INSTRUCTIONS.
2. BARRIER PARAMETERS MUST MEET THE FOLLOWING REQUIREMENTS:
 $V_{oc} \leq V_{max}$ $C_a \geq C_i + C_{Cable}$
 $I_{sc} \leq I_{max}$ $L_a \geq L_i + L_{Cable}$
3. MAXIMUM NON-HAZARDOUS AREA VOLTAGE MUST NOT EXCEED 250 V.
4. INSTALL IN ACCORDANCE WITH THE NEC (NFPA 70) AND ANSI/ISA RP12.6
5. FOR INTRINSICALLY SAFE CLASS II AND III, DIV 1, GP E, F AND G INSTALLATIONS WHERE CONDUIT IS NOT USED, INSTALL CABLE GLAND FITTING WHICH IS LISTED FOR CLASS II AND III HAZARDOUS (CLASSIFIED) LOCATIONS.
6. MAXIMUM CABLE LENGTH FOR REMOTE PROBE IS 10 FEET.

THIS DRAWING NOT TO BE CHANGED WITHOUT FM APPROVAL.

1	EO-3833A	WDE	MLS
2	EO-4281	MLS	9/10/96

TITLE
CONTROL DRAWING FM APPROVED
SERIES 670 K9 2 WIRE RF
CONTINUOUS LEVEL CONTROL

BY WDE	DATE 3/6/96	DRAWING NO. 9093-013	REV 2
APPD jac	DATE 5/1/96	SHEET 1	OF 1

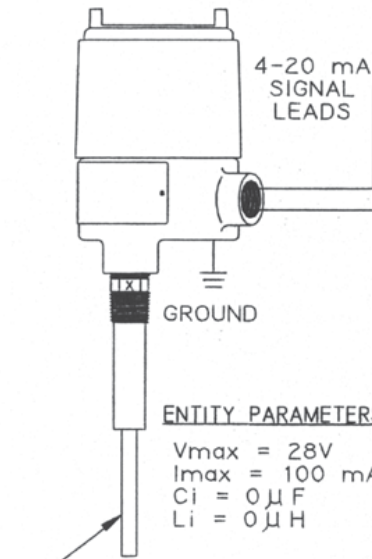


14685 West 105th Street Lenexa, Kansas 66215 USA
Tel. 913-888-2630 Fax 913-888-0767

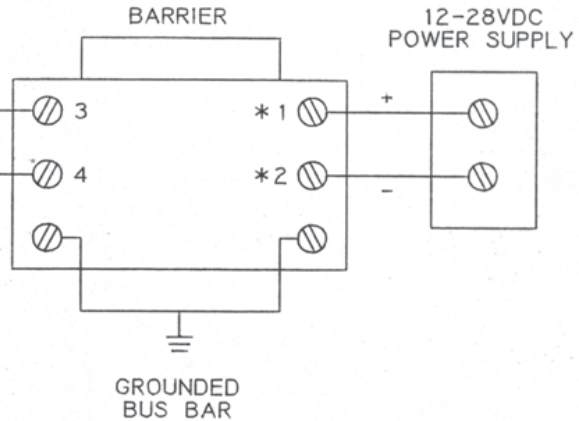
DRAWING NO. 9065-143

HAZARDOUS AREA

SERIES 670 K9 TRANSMITTER



SAFE AREA



EACH GROUND LEAD SHOWN MUST BE 1 OHM OR LESS TO EARTH GROUND

1. BARRIERS MUST BE INSTALLED IN ACCORDANCE WITH MANUFACTURERS INSTRUCTIONS.
2. BARRIER PARAMETERS MUST MEET THE FOLLOWING REQUIREMENTS:
 $V_{oc} \leq V_{max}$ $C_a \geq C_i + C_{Cable}$
 $I_{sc} \leq I_{max}$ $L_a \geq L_i + L_{Cable}$
3. MAXIMUM NON-HAZARDOUS AREA VOLTAGE MUST NOT EXCEED 250 V.
4. INSTALL IN ACCORDANCE WITH CANADIAN ELECTRICAL CODE, PART I.

Exia INTRINSICALLY SAFE/SECURITE INTRINSEQUE
 WARNING: SUBSTITUTION OF COMPONENTS MAY IMPAIR INTRINSIC SAFETY.
 ADVERTISSEMENT: LA SUBSTITUTION DE COMPOSANTS PEUT COMPROMETTRE LA SECURITE INTRINSEQUE

THIS DRAWING NOT TO BE CHANGED WITHOUT CSA APPROVAL.

1	EO-3B33A	WDE	MLS
2	EO-4281	MLS	9/10/96

TITLE
 CONTROL DRAWING CSA APPROVED
 SERIES 670 K9 2 WIRE
 LEVEL CONTROL

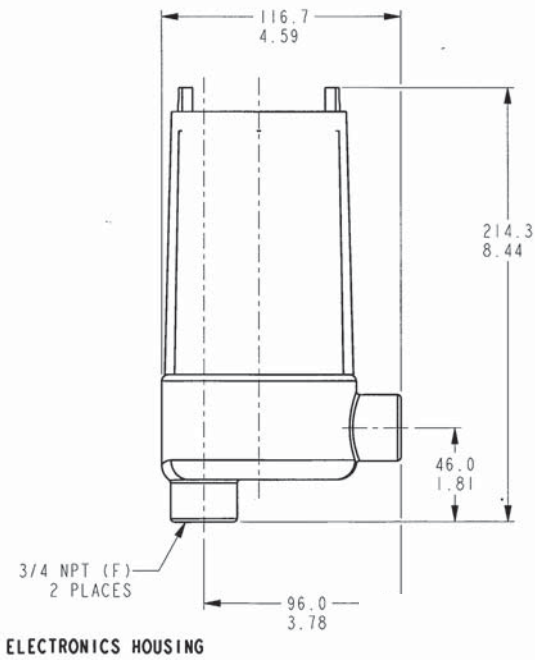
BY <i>J Howell</i>	DATE 12-11-95	DRAWING NO. 9065-143	REV 2
APPD <i>zxc</i>	DATE 4/10/96	SHEET 1 OF 1	

Troubleshooting

Symptom/Problem	Possible Cause	Corrective Action
Not current in the loop	<ol style="list-style-type: none"> 1. Power supply turned off 2. Improper wiring at TB1 3. Excessive loop resistance 	<ol style="list-style-type: none"> 1. Check power supply 2. Check electrical connections, figure 4 3. Reduce loop resistance or adjust power supply
Zero point cannot be set to 4.00mA at low level	<ol style="list-style-type: none"> 1. Fine zero incorrect 2. Probe capacitance greater than 500pF when coarse ZERO switch #4 is closed (all other switches open) 	<ol style="list-style-type: none"> 1. Check calibration 2. Use smaller diameter probe or replace bare probe w/insulated probe or locate probe farther from the vessel wall or consult the factory
Span point cannot be increased to 20mA at high level	<ol style="list-style-type: none"> 1. Insufficient probe capacitance 2. Excessive loop resistance 3. Incorrect calibration 	<ol style="list-style-type: none"> 1. Increase probe diameter or use probe w/higher dielectric insulation or locate probe closer to vessel wall or install a stilling well or consult the factory 2. Reduce loop resistance or adjust power supply 3. Check calibration
Span point cannot be decreased to 20mA at high level	<ol style="list-style-type: none"> 1. Low probe resistance to ground 2. Probe capacitance greater than 2,000pF 	<ol style="list-style-type: none"> 1. Consult the factory 2. Use a smaller diameter probe or replace bare probe w/insulated probe or locate the probe farther from the vessel wall
Transmitter output is 20mA or greater when the vessel is not full	<ol style="list-style-type: none"> 1. Incorrect calibration 2. Probe shorted to ground 3. Material build-up on probe 	<ol style="list-style-type: none"> 1. Recalibrate 2. Replace the probe 3. Clean probe and replace or possible misapplication, consult the factory
Erratic transmitter output	<ol style="list-style-type: none"> 1. Turbulent process 2. Radio frequency interference 3. Probe moving within the vessel 	<ol style="list-style-type: none"> 1. Install a stilling well 2. Install RFI/EMI filters 3. Improve probe anchoring
Drifting transmitter output	<ol style="list-style-type: none"> 1. Process material properties are changing 2. Probe insulation is eroded 3. Transmitter malfunction 	<ol style="list-style-type: none"> 1. Consult the factory 2. Verify probe integrity 3. Consult the factory
Non-linear output	<ol style="list-style-type: none"> 1. Extreme material build-up 2. Non-parallel surfaces near the probe 3. Conducting liquid in an ungrounded vessel, eg: fiberglass tank 	<ol style="list-style-type: none"> 1. Consult the factory 2. Mount the probe in a better location or install a stilling well, or install a probe with a ground rod 3. Connect to earth ground to instrument ground

Dimensions

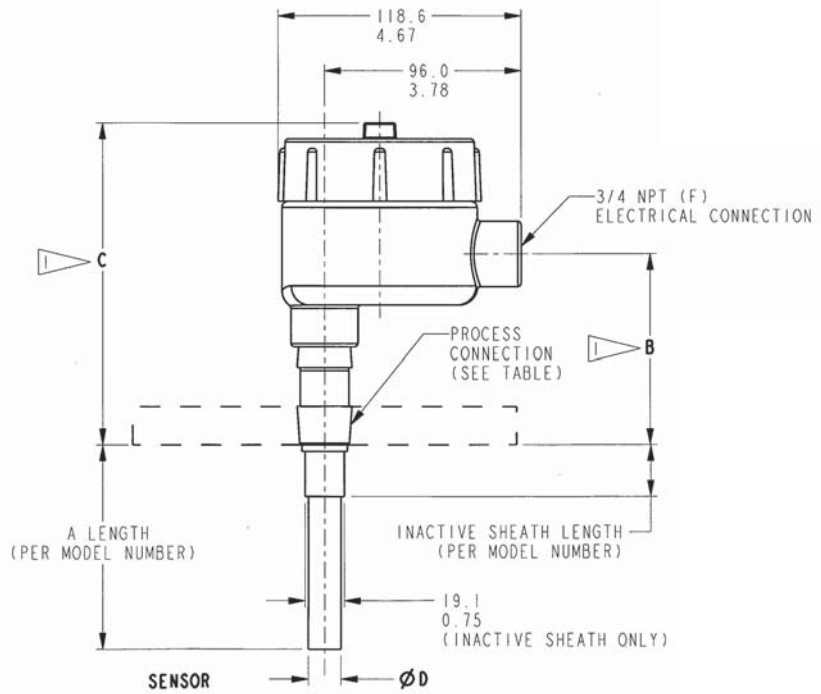
R Housing Configuration (Explosion Proof Remote)



*Dimensions are for reference only.
Contact the factory for certified drawings for a particular model number.*

NOTES:
1. THESE DIMENSIONS ARE BASED UPON A 5 THREAD ENGAGEMENT.

Linear = mm/inches
Drawing 0390653

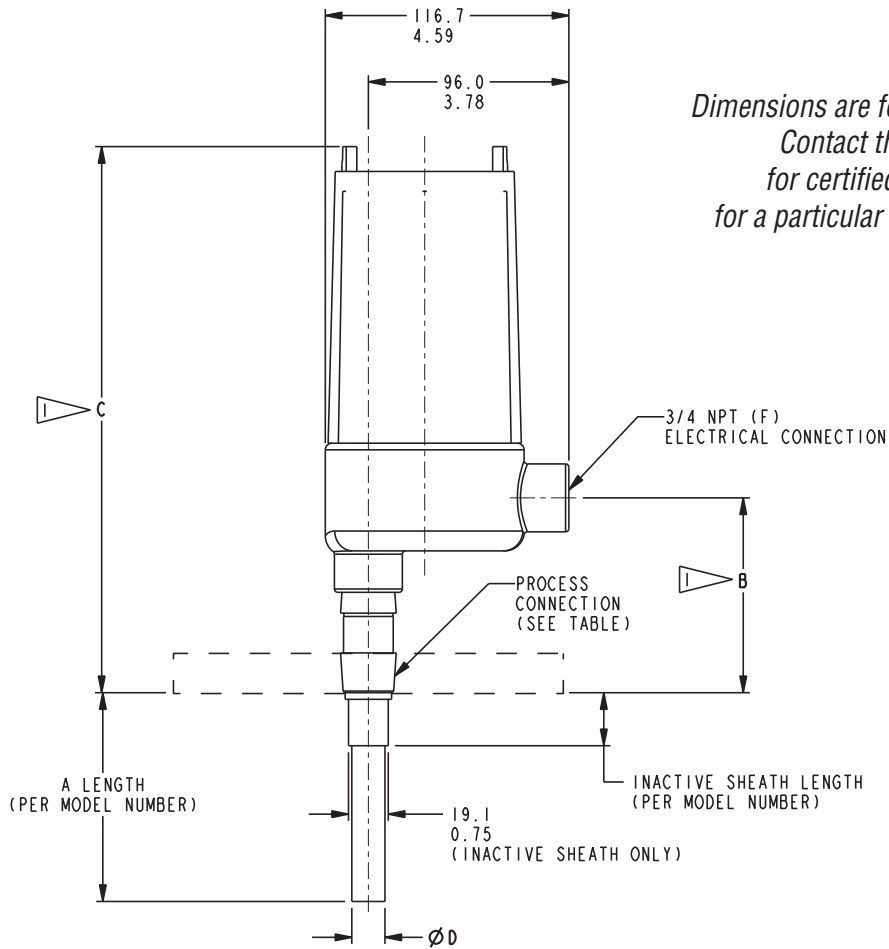


SENSOR STYLE	DIM D
BARE	12.7 0.50
SHEATH	15.9 0.63
BARE WITH STILLING WELL	26.7 1.05
SHEATH WITH STILLING WELL	26.7 1.05
CABLE	7.9 0.31
INACTIVE SHEATH	15.9 0.63
SANITARY	15.9 0.63

PROCESS CONNECTION	DIM B		DIM C	
	CABLE	ALL OTHER	CABLE	ALL OTHER
3/4 NPT (M)	87.8 3.46	94.1 3.71	152.9 6.02	159.2 6.27
1, 1-1/2, & 2 NPT (M)	99.7 3.92	97.3 3.83	164.8 6.49	162.4 6.39
FLANGED	158.5 6.24	158.5 6.24	223.7 8.81	223.7 8.81
STILLING WELL	N/A	120.0 4.72	N/A	185.1 7.29
SANITARY	N/A	94.1 3.71	N/A	159.2 6.27

Dimensions

K Housing Configuration (Explosion Proof Remote)



*Dimensions are for reference only.
Contact the factory
for certified drawings
for a particular model number.*

Linear = mm/inches

Drawing 0390654

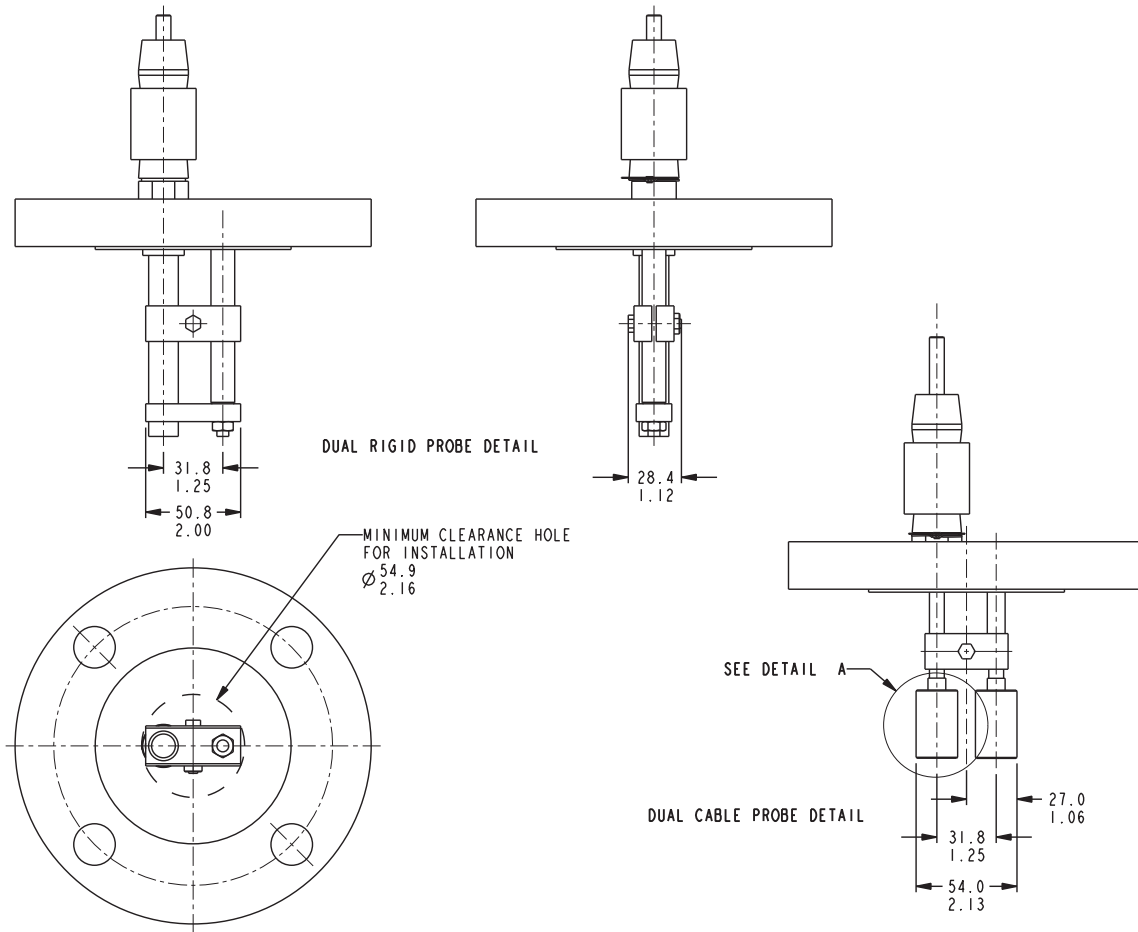
NOTES:
1. THESE DIMENSIONS ARE BASED UPON
A 5 THREAD ENGAGEMENT.

SENSOR STYLE	ØD
BARE	12.7 0.50
SHEATH	15.9 0.63
BARE WITH STILLING WELL	26.7 1.05
SHEATH WITH STILLING WELL	26.7 1.05
CABLE	7.90 0.31
INACTIVE SHEATH	15.9 0.63
SANITARY	15.9 0.63

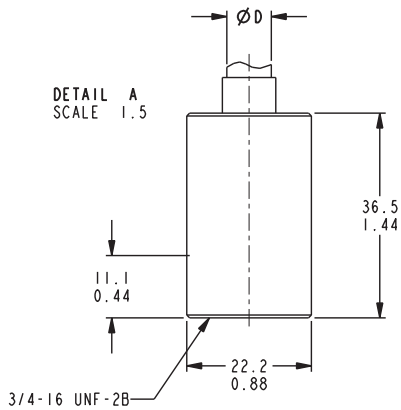
PROCESS CONNECTION	DIM B		DIM C	
	CABLE PROBE	ALL OTHER PROBES	CABLE PROBE	ALL OTHER PROBES
3/4 NPT (M)	87.8 3.46	94.1 3.71	256.0 10.08	262.4 10.33
1, 1-1/2, & 2 NPT (M)	99.7 3.92	97.3 3.83	268.0 10.55	265.6 10.46
FLANGED	158.5 6.24	158.5 6.24	326.8 12.87	326.8 12.87
STILLING WELL	N/A	120.0 4.72	N/A	288.3 11.35
SANITARY	N/A	94.1 3.71	N/A	262.4 10.33

Dimensions

Other Sensors



*Dimensions are for reference only.
 Contact the factory for certified drawings
 for a particular model number.*



Linear = mm/inches

Drawing 0390654



Printed in USA

www.sorinc.com

14685 West 105th Street, Lenexa, KS 66215 ■ 913-888-2630 ■ 800-676-6794 USA ■ Fax 913-888-0767

16/16 Registered Quality System to ISO 9001:2008

Form 837 (10.11) ©2011 SOR Inc.