



Type 1530 Pneumatic Level Switch

Form 500

Type 1530 is a horizontally mounted, float-operated level switch suitable for plant and OEM applications where pneumatic valve operation is required to signal presence or absence of liquid at a discrete level. The float extension arm moves a magnet which actuates (deactuates) a pilot valve to operate a pneumatic amplifier. Actuation (deactuation) can be reversed by rotating the unit 180 degrees.



Product Specifications

Mounting

Orientation Horizontal mount only

Connection Size 2" NPT(M) Standard

For Change To

Flange Mounting G2A *

*See flange table on page 2 for option designator

Maximum Process Pressure

Float Material

316SS 1500 psi (103 bar)

Monel 900 psi (62 bar)

Polypropylene 5000 psi (345 bar)

Process Temperature Range

Float Material

316SS -40 to 400°F (-40 to 204°C)

Monel -40 to 400°F (-40 to 204°C)

Polypropylene -40 to 150°F (-40 to 65°C)

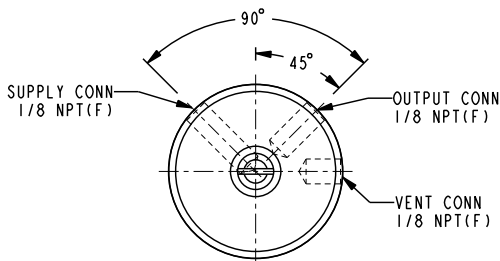
Supply Pressure Range 20 to 60 psi (1.4 to 4.1 bar)

Supply Pressure Connection Size 1/8" NPT(F)

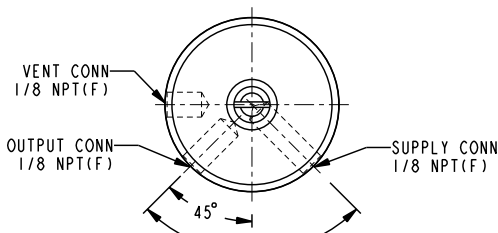
Minimum Specific Gravity 0.60

Design Code ANSI B31.3

Weight Approximately 6 lbs. (3 kg)



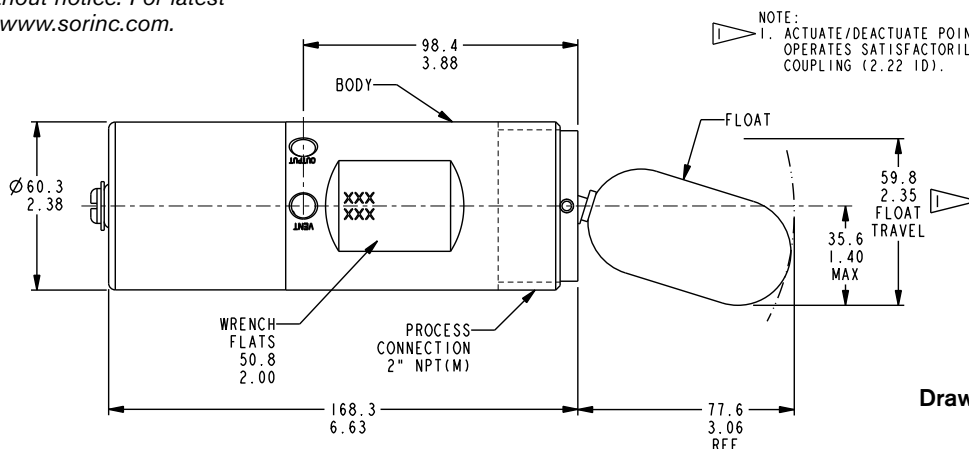
DIRECT ACTING



REVERSE ACTING

Design and specifications are subject to change without notice. For latest revision, see www.sorinc.com.

If supply pressure medium is natural gas, a filter/regulator is suggested on the supply line, and the valve vent port should be piped to a safe area.



Drawing 0390026

Type 1530 Pneumatic Level Switch

How to Order

Select model number from table below. Accessory designator(s) may be added after PS if required. See page 2.

Body Material	Float Material	Process Rating		Model Number
303SS* (Standard)	316SS	1500 psi -40 to 400°F	103 BAR	1530B -G2A - C - J0 - PS
	Monel	900 psi -40 to 400°F	62 BAR	1530B -G2A - M - J0 - PS
	Polypropylene	5000 psi -40 to 150°F	345 BAR	1530B -G2A - S - J0 - PS
316SS	316SS	1500 psi -40 to 400°F	103 BAR	1530C -G2A - C - J0 - PS
	Monel	900 psi -40 to 400°F	62 BAR	1530C -G2A - M - J0 - PS
	Polypropylene	5000 psi -40 to 150°F	345 BAR	1530C -G2A - S - J0 - PS

*Also known as ASTM A582.

Pneumatic Level Switch

Optional Flanges

316SS construction only.

Designator	Raised Face Flange	
G7C	2-1/2"	150#
G7D		300#
G7E		600#
G3C	3"	150#
G3D		300#
G3E		600#

Designator	Raised Face Flange	
G4C	4"	150#
G4D		300#
G6C	6"	150#
G6D		300#

On flanged units, the float will be detached from the unit during shipping.

Optional Accessories

Add option designator(s) to end of model number.

Description	Designator
Wetted parts are cleaned for industrial oxygen service.	BB
Canadian Registration Number (CRN) Consult the factory for applicable pressure and additional information.	CV
NACE construction - MR-01-75 / ISO 15156 2003. Available only with 316SS materials of construction.	NC
Tag, fiber. Attached with plastic wire to housing. Stamped with customer-specified tagging information.	PP
Stainless steel nameplate attached to housing with wire. Stamped with customer-specified tagging information. (2 lines, 18 characters and spaces per line.)	RR
Stainless steel nameplate permanently attached to housing. Stamped with customer-specified tagging information.	TT
Fungicidal varnish. Covers exterior and interior except working parts.	VV
ANSI B31.3 certificate of conformance.	CZ

Type 1530 Pneumatic Level Switch

Certificates

	Certificates	C1	C3	C4	C7	B7
1530 Pneumatic Level Switch	Calibration	◆				◆
	Inspection Report		◆			◆
	Compliance / Conformance			◆		◆
	QA Test Report				◆	

Replacement Parts

Description	Designator
Pneumatic Relay Assembly	3130 - 114
316SS Float Assembly	3130 - 052

Limited Warranty

SOR[®] agrees to repair or replace any switch found to be defective in material or workmanship within five years from date of shipment. The limited warranty is valid only if the switch was installed in accordance with published factory installation instructions, operated within the design limitations stated on the nameplate, and returned to the factory for inspection, freight prepaid, within the warranty period. Contact the factory for return authorization. No claim for labor or consequential damages will be allowed.

SOR® offers a full line of commercial-grade process instruments.

**echOsonix®
Level Transmitters**



**Level
Switches**



Level

**Temperature
Switches**



Temperature Pressure

**Flow
Switches**



Flow

**Pressure
Switches**



Process Instrumentation

We Deliver Quality On Time

SOR Inc.

14685 West 105th Street
Lenexa, Kansas 66215

Phone 913-888-2630
Toll Free 800-676-6794
Fax 913-888-0767

sorinc.com

SOR Europe, Ltd.

Farren Court
Cowfold
West Sussex RH13 8BP
United Kingdom

Phone +44 (0) 1403 864000
Fax +44 (0) 1403 864040

SOR - China

Room 903, No. 10 Building
Wan Da Plaza
No. 93 Jian Guo Road
Chao Yang District
Beijing, China 100022

Phone +86 (10) 5820 8767
Fax +86 (10) 58 20 8770

Registered Quality System to ISO 9001:2008

Form 500 (01.11) ©2011 SOR Inc.