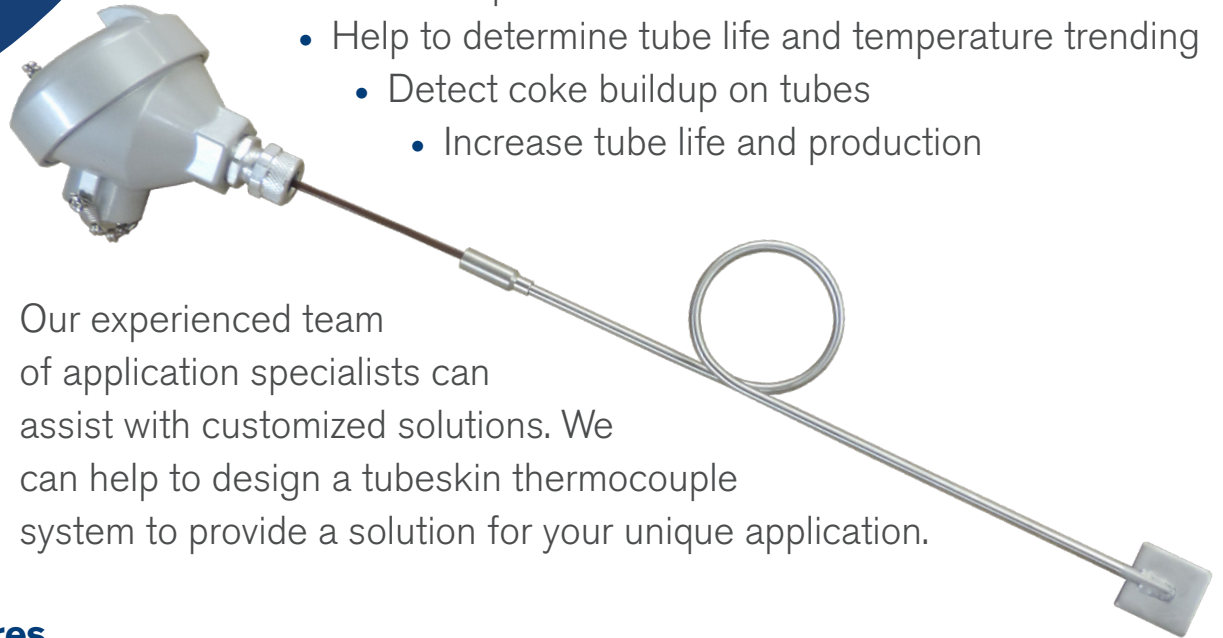


Tubeskin Thermocouples

Surface mounted [tubeskin thermocouples](#) are used to

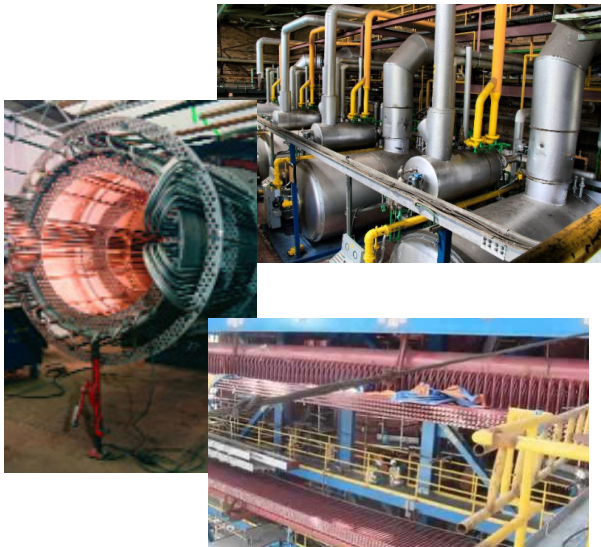
- Measure temperature of the tube wall
- Help to determine tube life and temperature trending
 - Detect coke buildup on tubes
 - Increase tube life and production



Our experienced team of application specialists can assist with customized solutions. We can help to design a tubeskin thermocouple system to provide a solution for your unique application.

Features

- Expansion loops and bends
- Parallel or radial heat shields
- Weld pads and wedge style
- Variety of materials



Applications

Boilers

Super Heaters

Furnaces

- Crude
- Vacuum
- Coker
- Cat Reformer
- Hydroprocessing
- Heavy Oil
- FCC

*Contact the factory and let us help
resolve your specific application needs.*